

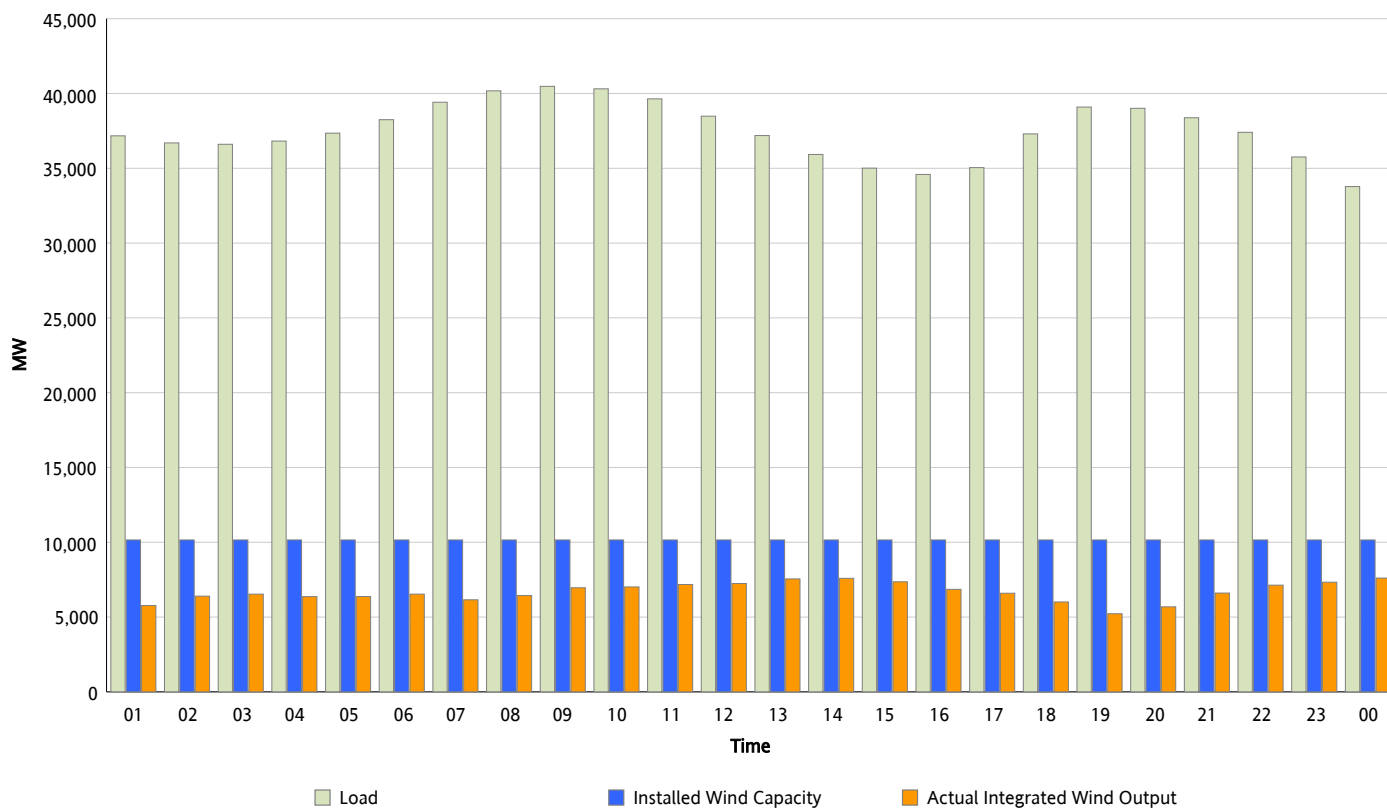


ERCOT Grid Operations

Wind Integration Report : 12/30/2012

Peak Load	40,477 MW
Load Peak Hour (HE)	09
Wind Over Peak	6,960 MW
Wind Record 12/25/12	8,638 MW
Max Wind Value*	7,748 MW
Wind Peak Time	23:50
Wind Integration %	23.47 %

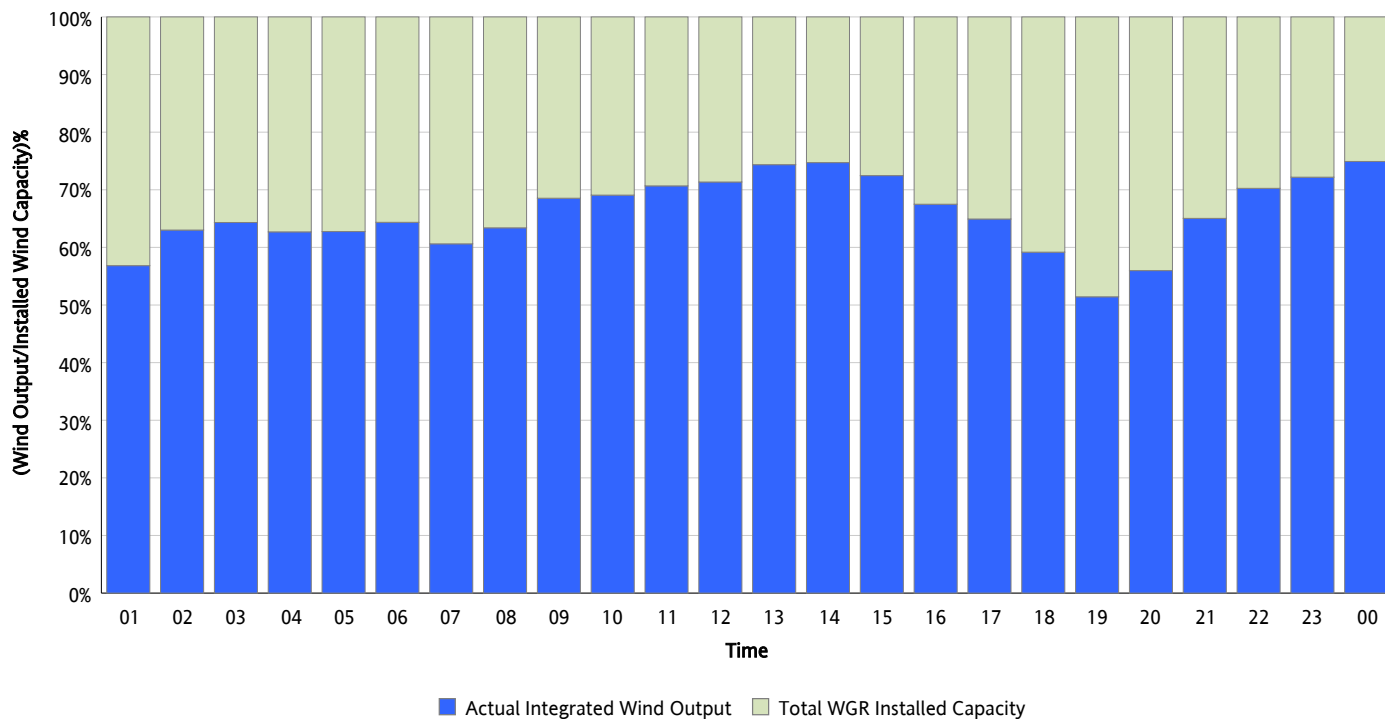
Hourly Average Actual Load vs. Actual Wind Output
12/30/2012



* Wind Record and Wind Max represent instantaneous values and the rest of the values are integrated over the hour

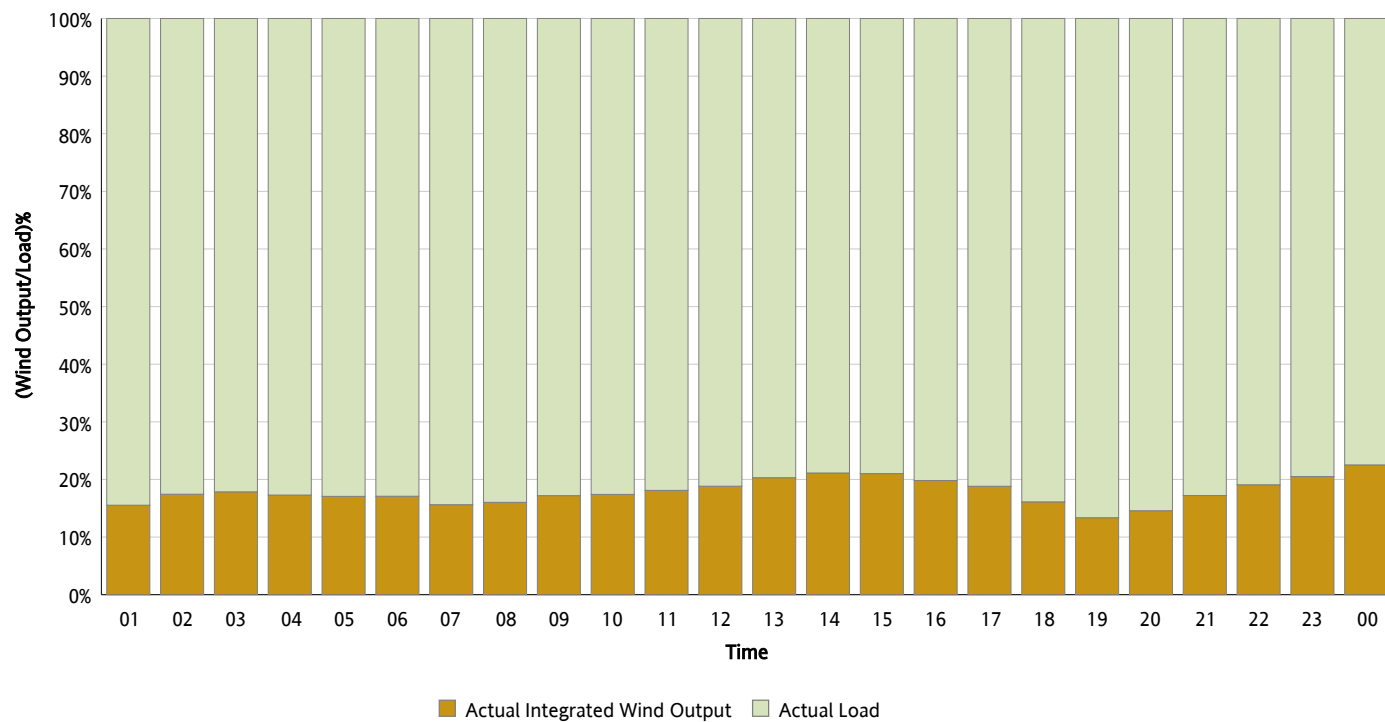
Actual Wind Output as a Percentage of the Total Installed Wind Capacity

12/30/2012



Actual Wind Output as a Percentage of the ERCOT Load

12/30/2012



ERCOT Load vs. Actual Wind Output

12/23/2012 - 12/30/2012

